



**CITY BEACH
HOLDING S.A**



LOOK TO THE FUTURE !



CITY BEACH HOLDING S.A



CITY BEACH HOLDING is a wealth and equity company, based in Abidjan and the sub-region. She has more than 20 years of experience in entrepreneurship and business.

To date, it has around 10 companies active in the following fields of activity:

- **Safety and security**
- **Construction and development**
- **Communication and Telecommunications**
- **Intermediation and Lobbying**
- **Trade in raw materials (Coffee/Cocoa, Cashew, rubber, etc.)**
- **Sale and purchase of vehicles**
- **Rental of trucks and heavy machinery**
- **Seeking funding for States and governments in Africa and for the private sector of those States; Intermediation**
- **Development of investment in Agriculture, Agro-Industry, Agricultural, Energy and Mining Machinery, Oil and Infrastructure**
- **Development of the truck transport sector, low-cost vehicles and transport promotion (Tricycles, river transport, two wheels etc.)**
- **Development of the real estate sector by in place real estate promotion, chain of hotels and new building materials**
- **Development of the health sector by the construction of specialized clinics and hospitals;**
- **Development of the education and training sector through the establishment of special schools and elite schools**
- **Import-Export of goods and marketing wholesale and semi-wholesale, in particular sachets and various types of packaging and products;**



Each company, well structured and well organized, works with the aim of providing customers with a impeccable quality.



THE CEO

AMANI ASSIE GERVAIS

Agro-Industrial Engineer, **Sir Amani Assié Gervais** is an expert in the production and marketing of raw materials (cocoa, coffee and rubber).

He has more than 30 years of business experience here in Côte d'Ivoire and around the world.

A multi-dimensional man, he played an important role in the development of telecommunications in Côte d'Ivoire through the creation of AROBASE TELECOM (which is behind the deployment of Fiber Optic in Côte d'Ivoire, before being sold to MTN CI with a Global Deal closing of about US\$200 million) and BASIC SECURITY (the National Center for Video Surveillance and Imagery).

This accumulated experience has enabled him to develop a global perspective on all the activities that contribute to the development of our country.

He is surrounded by a dynamic team of passionate young people who work to produce the best to meet the aspirations of businesses and people.



REAL PROPERTY

Start your project with confidence. We offer project management services from start to finish that simplify communication, maximize coordination and deliver better project results. Through early engagement, constant monitoring and task alignments, we can accelerate the value of your project, ensuring the success of all stakeholders.

With our new builders, we can design, develop and deliver innovative and high-end commercial creations, giving owners and developers a competitive edge

- **Preconstruction planning**
- **Construction of new buildings**
- **Interior design work**
- **Construction management**
- **Construction consultancy**
- **Design Construction**
- **Site Improvements**
- **Works of art, sanitation**
- **Real estate promotion**
- **Renovation, rehabilitation**
- **Earthmoving**
- **Work of VRD (Roads, gardens ...)**





MOKEYVILLE (BASSAM) REAL ESTATE OPERATION PROJECT





AUTO

Our dynamic was born of a real passion for the automotive sector and a good mastery of the sector.

We specialize in the sale, rental and maintenance of all types of vehicles and construction equipment.

At home, all vehicles are rigorously controlled to ensure quality, safety and peace of mind for customers.

As our goal is to provide our customers with quality service, you will find in this catalog a wide range of products to satisfy your request.



Your new Auto-Market!





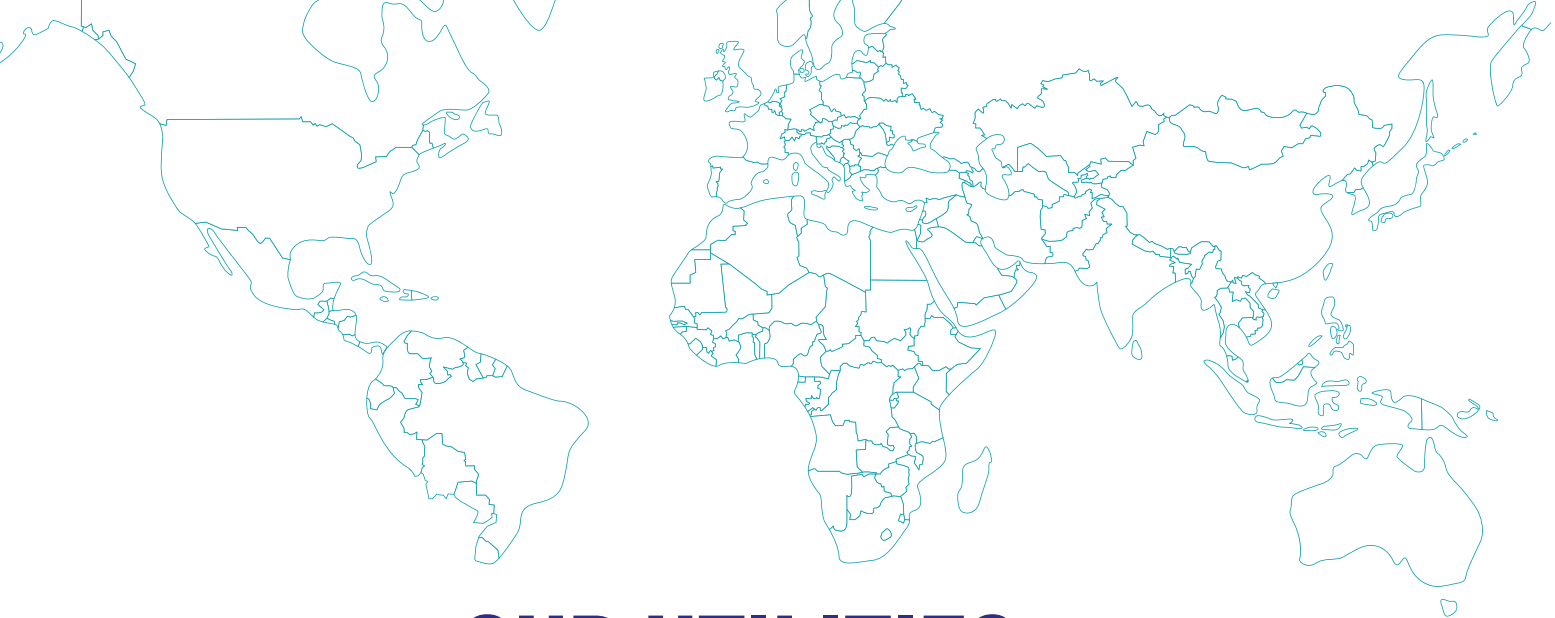
OUR GEAR





OUR TRUCKS





OUR UTILITIES







**CITY BEACH
HOLDING S.A**



FIRST TRICYCLE DISPENSER ELECTRIC, ENERGY RECHARGEABLE SOLAR FOR RURAL AND VILLAGE AREAS



SPECIFICATIONS

CARGO SIZE: 1300mmx1000mmx
LOAD CAPACITY: 500kg
48V,45Ah
60V,45Ah
SUNROOF
FAN
AUDIO
HEATING



SPECIFICATIONS

1. VEHICLE SIZE:
2955X1180X1660mm
2. MAXIMUM POWER: 2000WD
3. CONTROLLER: 60-72V[PMS]
4. LOAD WEIGHT: 1200KG
5. FRONT DAMPING SYSTEM:
HYDRAULIC DAMPING
6. REAR DAMPING SYSTEM:
LEAF SPRING DAMPING
7. TIRE BRAND : 145/12
[CUSTOMIZED]



SPECIFICATIONS

1. VEHICLE SIZE:
2955X1180X1660mm
2. MAXIMUM POWER:
2000WD
3. CONTROLLER: 60-
72V[PMS]
4. LOAD WEIGHT: 1200KG
5. FRONT DAMPING
SYSTEM: HYDRAULIC
DAMPING
6. REAR DAMPING
SYSTEM: LEAF SPRING
DAMPING
7. TIRE BRAND : 145/12
[CUSTOMIZED]



SPECIFICATIONS

Use For: Cargo Driving Type:
Electric Body Type: Open
Power: > 800W
Voltage: 60V
Size: 1.22 * 2.0 m
electric machinery: 60V 1500W
controller: Haoda 60v1500w
brushless controller
Front / rear tires: Front / back 4.50-12 (SWAP)
Steering mode: Handle style
Rear axle tube: one
Headlamp: LED (double lamp)
meter: Electronic liquid crystal
Window glass: Hand lift glass
skylight: Single (multi-function)



SPECIFICATIONS

Use For: Cargo
Driving Type: Electric Body Type: Open
Power: > 800W Voltage: 60V
Size: 1.3 * 1.8 m
electric machinery: 60V 1200W
controller: Haoda 48V / 60V 24 tube C type 60A
Front/rear tires: Front / rear 4.00-12 (SWAP)
Steering mode: Middle handle style
Posterior bridge: Dynamic force
Rear axle tube: one
Headlamp: LED (double lamp)
meter: Electronic liquid crystal
Window glass: Push-pull glass
Braking mode: Front brake / rear drum brake



SPECIFICATIONS

Driving Type: Electric
Power:> 800W Voltage:60V
Size: 3500x1300x1500
Product name: Electric Tricycle
Colour: Dark blue Wheel Size: F/5.00-12
Powerful:2000W
Maximum speed: $\leq 40\text{km/h}$
Charging Time: 6-8hours
Max load capacity: 1000KG
Climbing Ability: ≤ 30 degrees
Maximum mileage: $\leq 100\text{km}$ electric tricycle



MINES, ENERGY & OIL

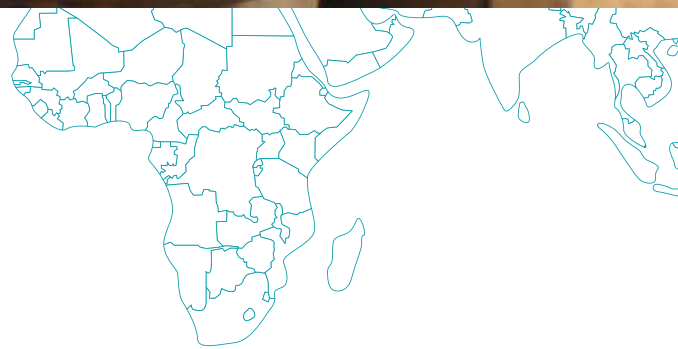


The fields of environment, energy and mining are one of the privileged fields for the development of foreign direct investment, particularly because they require both technical and commercial expertise and the development of high-performance modern facilities. They are therefore justified, both as a vehicle for economic growth and as a means of technological development of the country.

New energy technologies and services available to **CITY BEACH HOLDING** will, for example, improve the efficiency and reduce the environmental impact of resource exploitation, stimulate economic growth and create jobs in Côte d'Ivoire and the sub-region.



EDUCATION & HEALTH



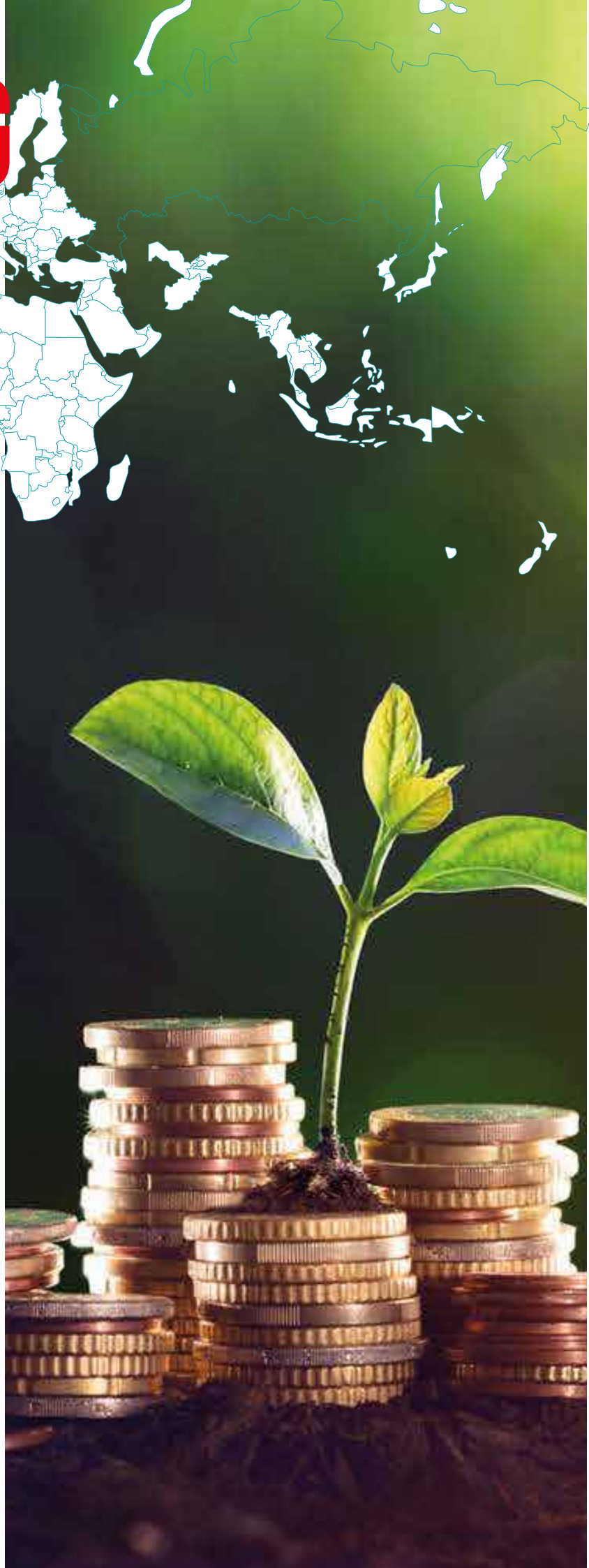
Education is a powerful force for change and development. It improves health and livelihoods, contributes to social stability and boosts long-term economic growth. It is also essential for the achievement of each of the Sustainable Development Goals. **CITY BEACH HOLDING** helps countries, organizations and individuals by building schools, health centers and funding all projects aimed at strengthening education and health.

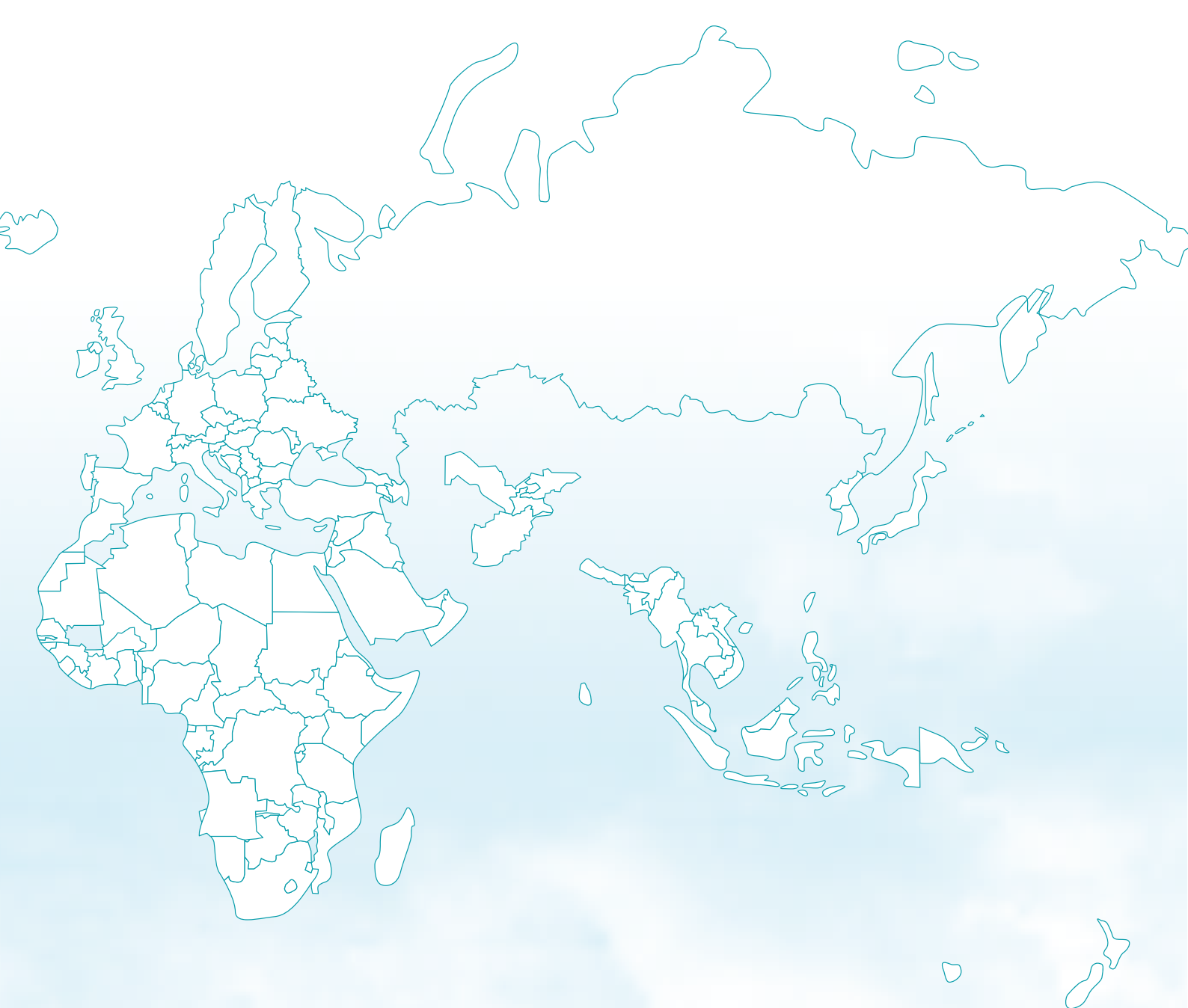
FINANCING PROJECT MANAGER

YOU'RE LOOKING
FOR FUNDING ?

CITY BEACH HOLDING is a player in public and private support for business development. It finances development projects in Côte d'Ivoire and the sub-region through loans, grants, guarantees and equity.

Our concessional and long-term financing is available to governments, local authorities, public and private enterprises, including banks, NGOs, and foundations.





**CITY BEACH
HOLDING S.A**

Abidjan, Plateau, Imm. Ebrien, 2è Etage
Tél. : 25 22 01 94 41 - Email: automarket@citybeachauto.ci
www.citybeachauto.ci